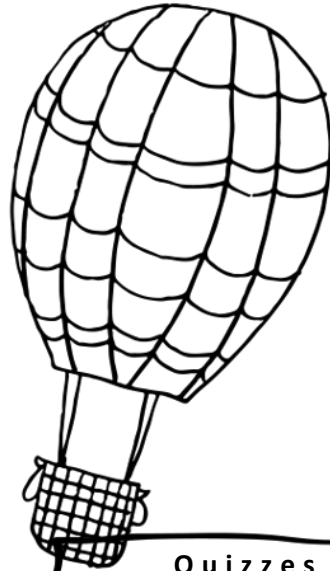


English II

Mrs. Barden

Supplies Needed

- ✓ Composition book
- ✓ Pencils
- ✓ Blue or black pens



Classwork & Homework policy:

- Classwork is due at the end of class each day.
- You must turn in all work at the end of class, even if it is not complete.
- There is no homework.
- If you are absent it is **your responsibility** to contact or speak to the teacher, before or after school, not during a lesson.

Tentative Due Dates for Reading Projects

- Outside Reading 1 - October 17
- Outside Reading 2 - December 13
- Outside Reading 3 - March 5
- Outside Reading 4 - May 22

Quizzes

Quizzes are given over reading assignments, notes, and grammar lessons. Not all quizzes are announced and quizzes cannot be corrected.

"If you want to learn, no one can stop you; if you don't want to try, no one can help you."

Hall Passes

Leaving the classroom is for emergencies only. One boy and one girl may be gone at a time at the teachers discretion..

3rd yjfkpn 6th g70v8og
4th 36i2hd 7th q8vnuj
8th 7teinv

Google Classroom

Literature Notebook

Your composition book will be used to keep all of your notes & handouts in one place to create an interactive notebook (a.k.a. helpful study tool!). This notebook will be checked periodically for a grade. Be sure to keep it up-to-date.

Tardies

Being late to class is not acceptable. Disciplinary action will be taken on the first offense. Walk faster.

How can I earn an A on a assignment?

1. Follow all directions exactly. Carefully read instructions and review sample work.
2. Put in some thought and planning. Do not just fill a word count or space.
3. Do all preliminary work assigned and turn it in on time.
4. Avoid writing errors by careful proofreading. Ask a friend or family member to help proof.
5. Be sure your thoughts are logically organized in a definite order.

Sign up for Remind



Have a question? E-mail me!

kbarden@scuc.txed.net

