

2013-2014

Practice Test:

Name: Key

The Skull

Diagram A

- I coronal suture
- D frontal
- O lambdoidal suture
- P mastoid process
- T maxilla
- E nasal
- N occipital
- K parietal
- M temporal

Diagram B

- G ethmoid
- Q external auditory meatus
- F lacrimal
- L mandibular fossa
- H sphenoid
- J squamosal suture
- C zygomatic bone & process
- B vomer

Diagram C- inferior view

- C foramen magnum
- B occipital condyles
- A palatine bones & processes

Diagram D - sinuses

- B ethmoid sinus
- A frontal sinus
- D maxillary sinus
- C sphenoid sinus

Diagram E - mandible

- A angle
- U body
- R mandibular condyle
- S ramus

Diagrams A,B&E

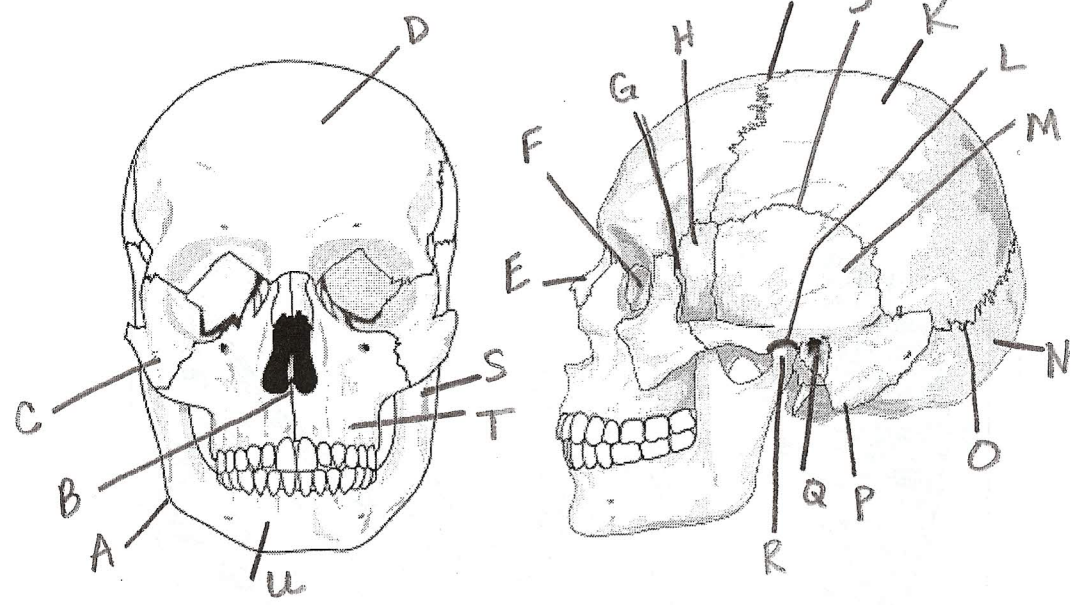


Diagram D

Diagram C

