

A&P Unit 4 Skeletal System Notes Worksheet

Name: Key

Use your textbook to complete & study the following information. You will have a separate Test in TWO parts over the information contained in this Notes WS. The completed Notes WS will be your Test EC.

Page 212

1. Define:

- a. Sutures *irregular lines where bones join together*
- b. Sesamoid bones *develop in tendons to reduce friction*

2. What makes the hyoid bone different from all the other bones?

It does not articulate with any other bones

Page 215: You will need to memorize all the bone terms in Table 7.4.

Match the definition to the term:

- S 1. Very large blunt irregular shaped process for muscle attachment (only on femur)
- I 2. Tiny pit or depression
- F 3. Soft spot in skull where membranes cover spot between bones
- D 4. Smooth, nearly flat articular surface
- T 5. Small rounded projection or process
- P 6. Sharp, slender often pointed (thorn-like) process: for muscle attachment
- A 7. Rounded articular process
- G 8. Round or oval opening through a bone for vessels and nerves
- N 9. Relatively flat branch of bone
- C 10. Raised area on or above a condyle
- E 11. Narrow slitlike opening (cleft) for blood vessels and nerves
- B 12. Narrow ridgelike projection – more prominent
- K 13. Narrow ridge of bone, less prominent
- U 14. Large rounded projection, may be roughened
- Q 15. Furrow or groove
- J 16. Expansion on end of bone
- O 17. Cavity within a bone, filled with air & lined with mucus membranes
- M 18. Canal like passageway within a bone
- H 19. Basin like depression, often serves as articular surface
- L 20. Any prominent projection on a bone
- R 21. Interlocking line of union between bones

~~A.~~ condyle

~~B.~~ crest

~~C.~~ epicondyle

~~D.~~ facet

~~E.~~ fissure

~~F.~~ fontanel

~~G.~~ foramen

~~H.~~ fossa

~~I.~~ fovea

~~J.~~ head

~~K.~~ linea

~~L.~~ process

~~M.~~ meatus

~~N.~~ ramus

~~O.~~ sinus

~~P.~~ spine

~~Q.~~ sulcus

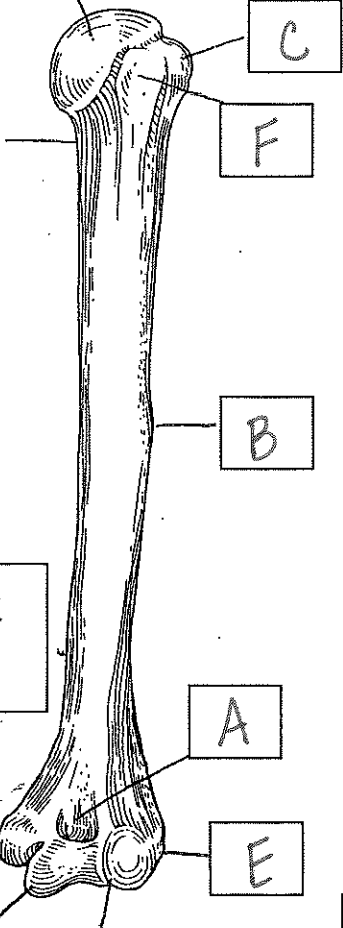
~~R.~~ suture

~~S.~~ trochanter

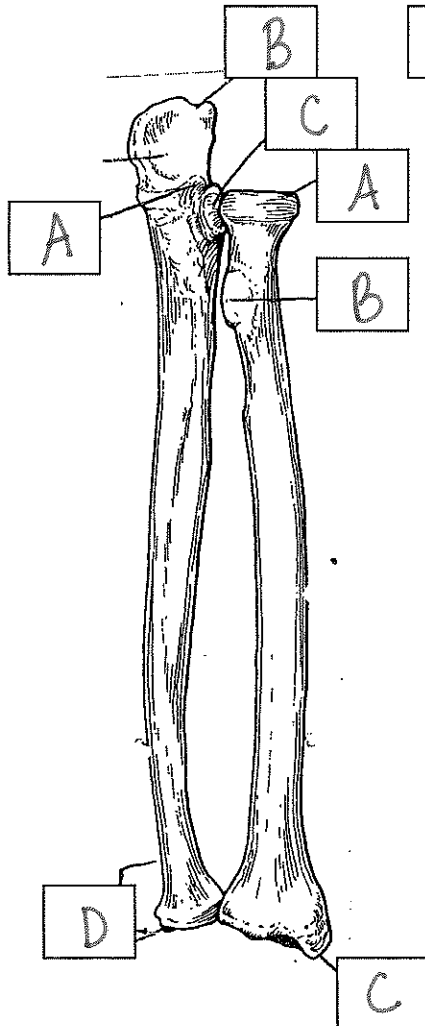
~~T.~~ tubercle

~~U.~~ tuberosity

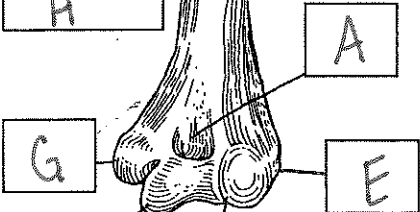
D ANTERIOR



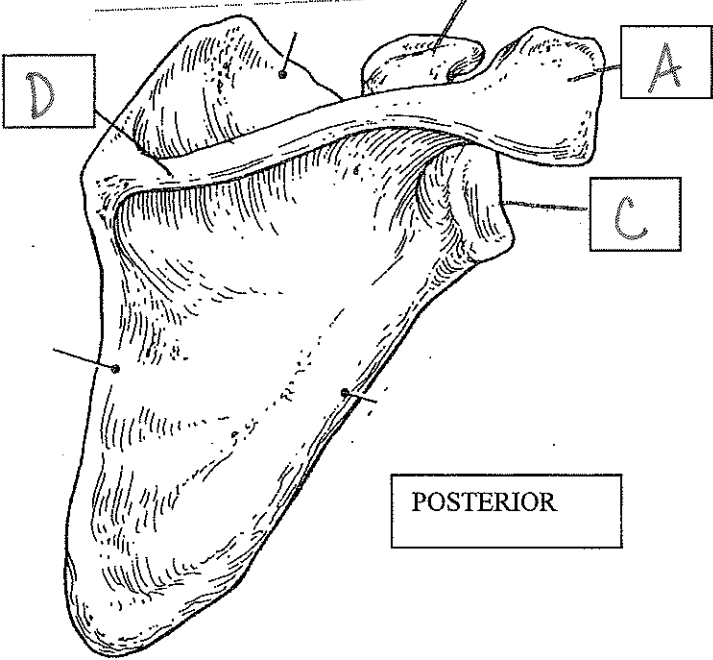
ANTERIOR



Fossa on posterior
H

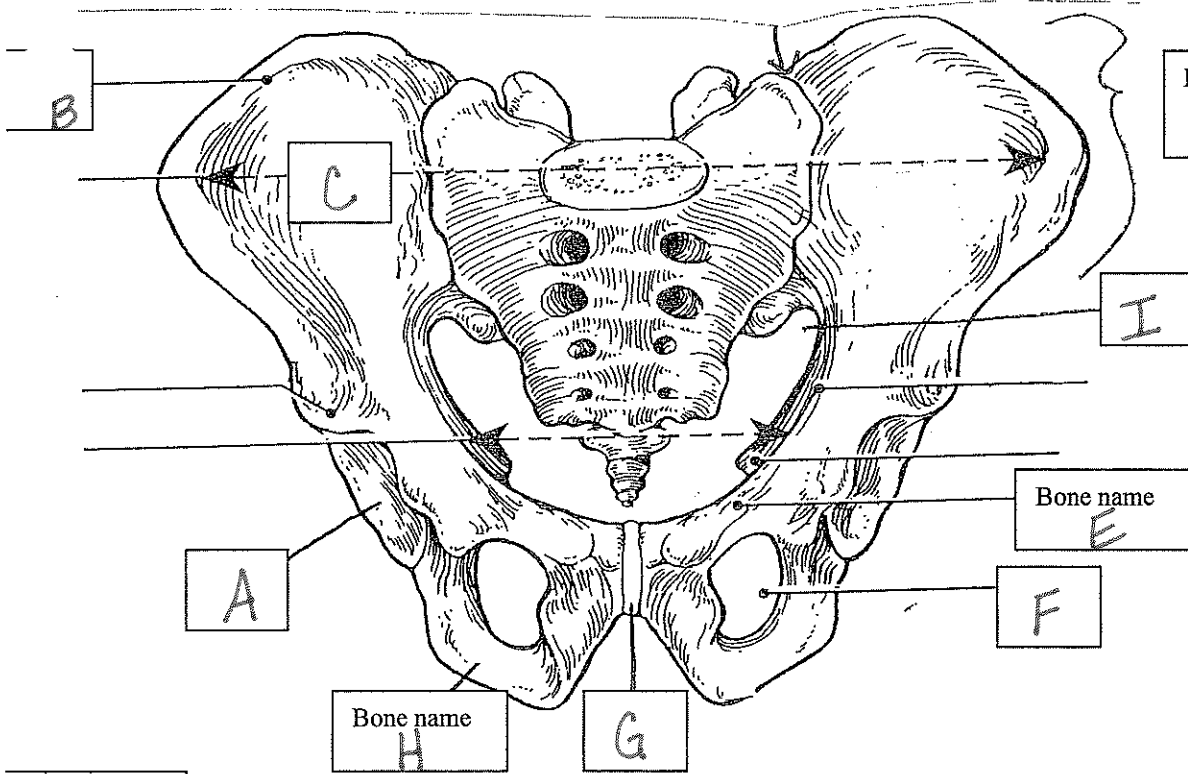


B



POSTERIOR

ANTERIOR



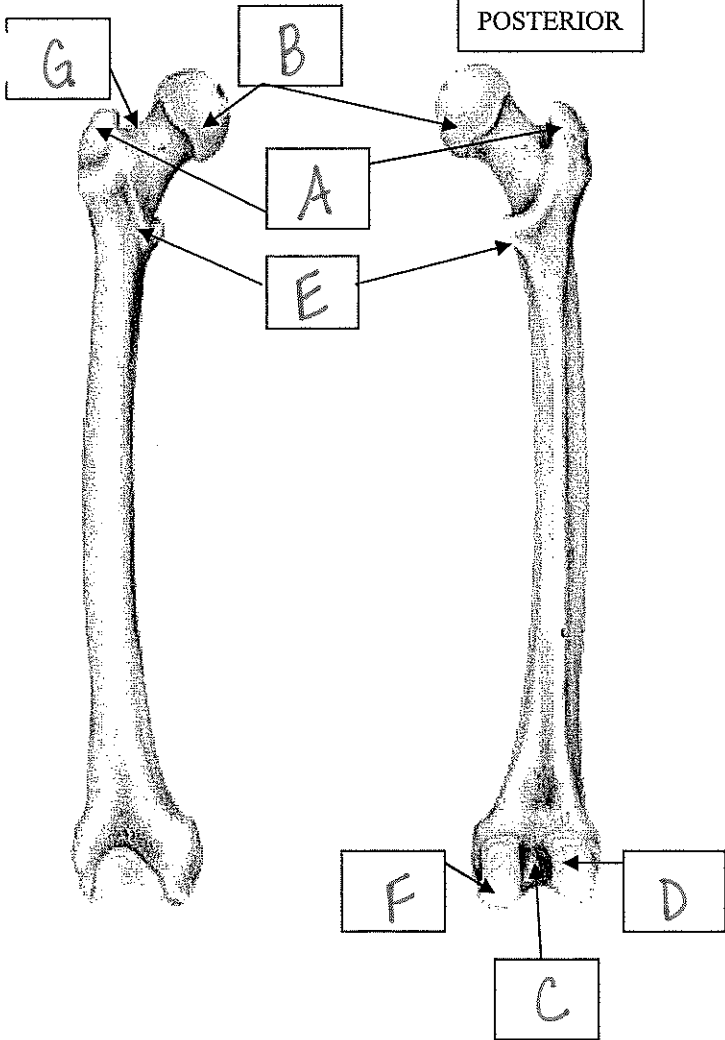
Bone name
D

Bone name
E

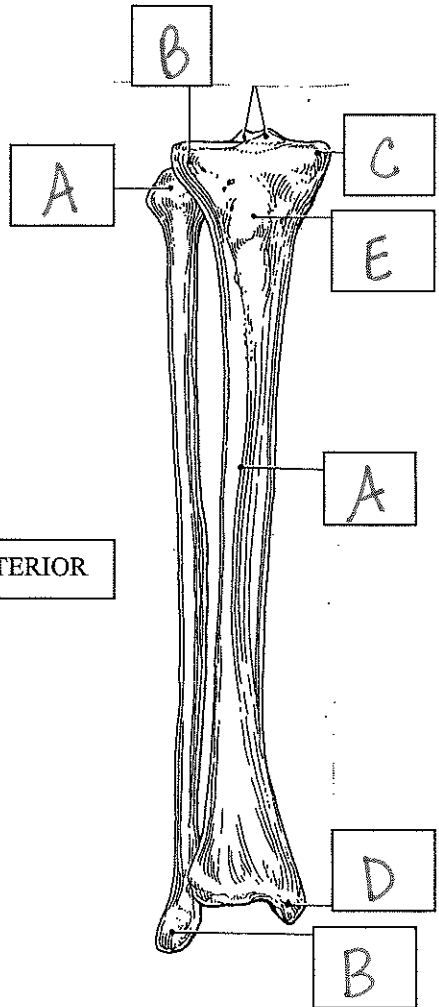
Bone name
H

ANTERIOR

POSTERIOR



ANTERIOR



Axial Skeleton (42 parts)

Use your textbook to identify the following bone parts. When you have completed them, you may come check your answers with me before beginning your intensive studies!

The Skull Diagram A

- 2 coronal suture
- 1 frontal
- 7 lambdoidal suture
- 10 mandible
- 6 mastoid process
- 4 maxilla
- 3 nasal
- 5 occipital
- 9 parietal
- 8 temporal

Diagram B

- 4 ethmoid
- 7 external auditory meatus
- 3 lacrimal
- 5 sphenoid
- 6 squamosal suture
- 2 zygomatic bone & process
- 1 vomer

Diagram C— inferior view

- 2 foramen magnum
- 4 mandibular fossa
- 5 nasal conchae/turbinates
- 1 occipital condyles
- 3 palatine bones & processes

Diagram D - Thorax

- 4 gladiolus/body
- 6 manubrium
- 1 vertebral ribs
- 2 vertebrochondral rib
- 5 vertebrosteral rib
- 3 xiphoid process

Diagram E - Vertebrae Parts & Vertebral Column

- 3 body of vertebrae
- 5 intervertebral disc
- 6 intervertebral foramen
- 4 spinous process
- 7 transverse foramen
- 1 transverse process
- 2 vertebral foramen

Types of Vertebrae (use models)

- B atlas
- C axis
- E cervical
- I coccygeal
- A lumbar
- H sacral
- D thoracic