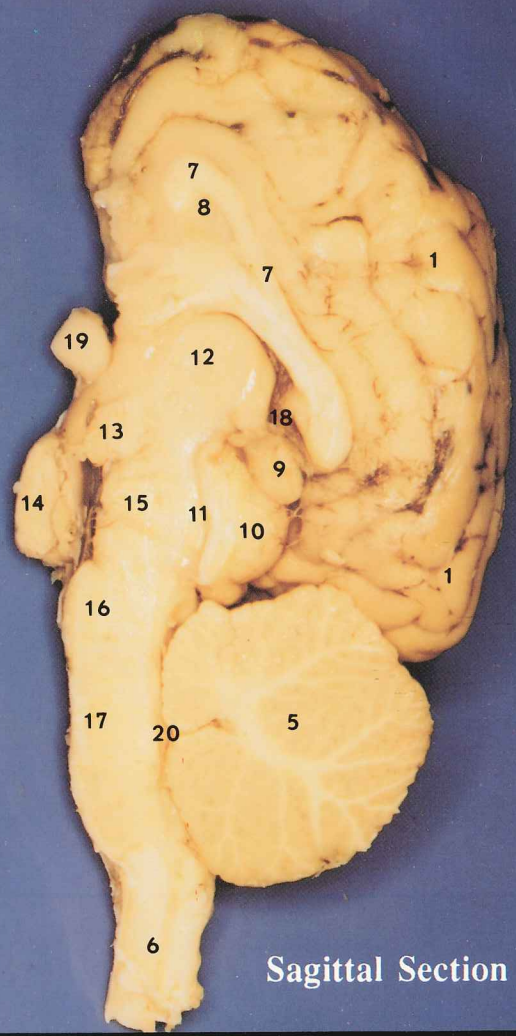


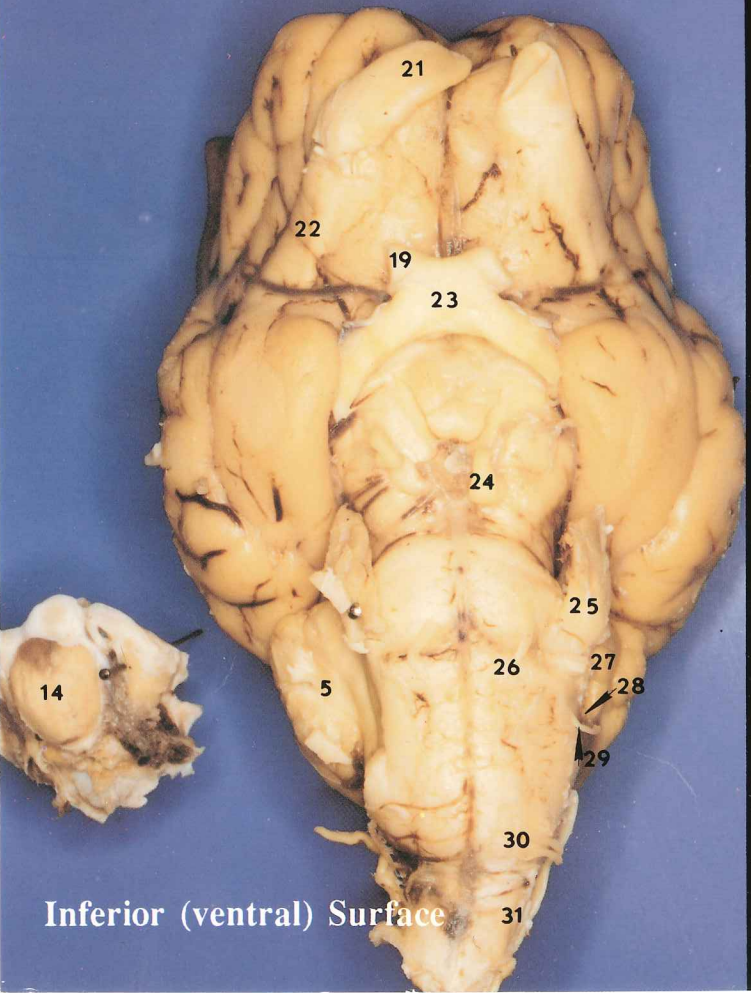
Superior (dorsal) Surface



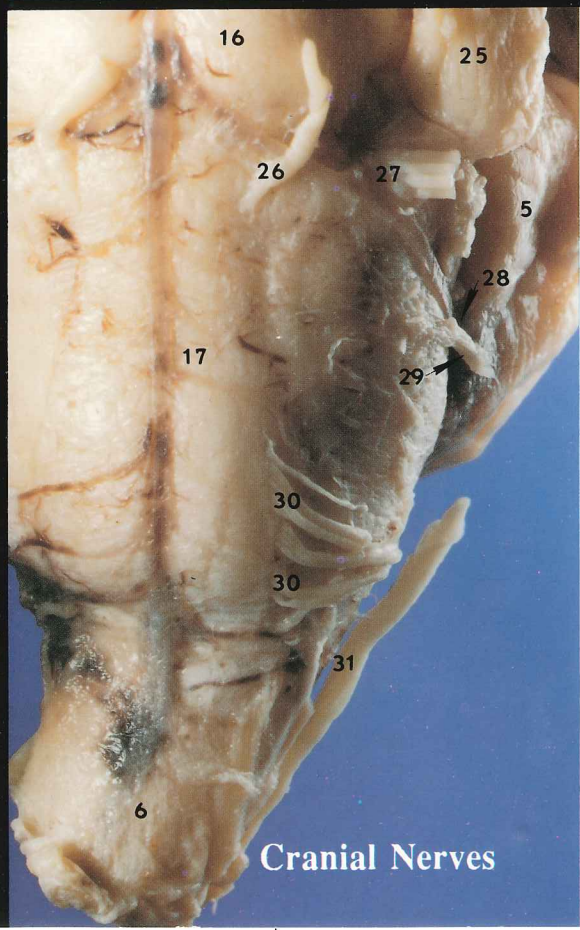
Sagittal Section

BRAIN

- 1. cerebral cortex
- 2. longitudinal fissure
- 3. gyrus
- 4. sulcus
- 5. cerebellum
- 6. spinal cord
- 7. corpus callosum
- 8. septum pellucidum
(lateral ventricle is behind this)
- 9. pineal gland
- 10. superior colliculus
- 11. cerebral aqueduct
- 12. thalamus
- 13. hypothalamus
- 14. pituitary gland
- 15. midbrain
- 16. pons
- 17. medulla oblongata
- 18. third ventricle
- 19. optic nerve
- 20. fourth ventricle
- 21. olfactory bulb
- 22. olfactory tract I
- 23. optic chiasma II
- 24. oculomotor n. III
- 25. trigeminal n. V
- 26. abducens n. VI
- 27. facial n. VII
- 28. glossopharyngeal n. IX
- 29. vagus n. X
- 30. hypoglossal n. XII
- 31. spinal accessory n. XI



Inferior (ventral) Surface



Cranial Nerves

BioCam Communications Inc.

Box 417, Sta. A.
Kelowna, B.C.
Canada V1Y 7N8

Box 8110-12
Blaine, WA 98230
U.S.A.